



What's News — April 2021

L'Arche Hobart Beni-Abbes Community



On Saturday 27 March, we formally and joyfully welcomed Stewart Betts as our Acting Community Leader. We also enjoyed the opportunity to meet Stewart's family and shared a hearty barbecue lunch. Full story pages 4-5.

Dear all

As Easter approaches there are many traditions to remind us of how service is a cornerstone of healthy community. This spirit of service remains abundant despite the challenges we face as a community of L'Arche Hobart. The Board and Council continue to meet in a spirit of solidarity to service the needs of community. Our assistants demonstrate immense service in maintaining our

beautiful homes and supporting each other to live each day to the full. Equally our core members serve the community with an abundance of wisdom and lead us in modelling the strength we need to meet change with courage.

Personally I am inspired by witnessing these acts of service which are always carried out with humility and sincerity. There have been spontaneous invitations for guests to share a meal,

presents purchased to mark milestones and offers of support over cups of tea. These acts remain a great source of hope and are a sign of all that is good about L'Arche Hobart and humanity. Best wishes for a safe and peaceful Easter.

Stewart Betts

Acting Community Leader

Events!

Tuesday 6 April – **Celebration of Greg Burles' incredible contribution to Community**, 6-8 pm, 40 Pirie St. (Note: this event will replace Solidarity for April.)

Wednesday 21 April – **Coffee Night**, 7-8.30 pm, 40 Pirie Street

Tuesday 4 May – **Solidarity**, 6-8 pm, 40 Pirie Street

Wednesday 19 May – **Café L'Arche**, 7-8.30 pm, 40 Pirie Street

Saturday 29 May – **35th anniversary luncheon**, 12 noon, St Therese's Hall
– more details to follow

All welcome

Bits and pieces

Index

- 1. Greetings from Stewart, events
- 2-3. Prayer Points, editor's ramblings, odds and ends
- 4-5. Welcome Stewart
- 6. Spotlight on Stewart, Rosey's holiday
- 7. Garry's birthday
- 8. Café L'Arche
- 9. Andy's birthday
- 10-11. Beni-Abbes history
- 12. Recent stories
- 13-14. Calendar, events, birthdays, contact details etc.

L'Arche Hobart (Beni-Abbes)

Mission Statement
(in conjunction with the International Identity and Mission Statement)

At Beni-Abbes we are people with and without disability who create homes and community.

We share our lives in real friendships, as we cook, share meals, pray together, talk, listen, help each other, through the good and the hard times in the spirit of love, as a sign of hope to others.

God is revealed to us when we celebrate and gather to pray and through relationships that are built on faithful, open and welcoming hearts.

Dear L'Arche friends,

I've been scanning old Beni-Abbes photos and have been struck by the number of time the description reads "Celebrating Ian's birthday," "Celebrating Carolyn coming into membership," "Celebrating the anniversary of L'Arche" and so on. Celebration is still an important element of L'Arche – in fact John Coleman wrote a song about it for the Federation not long ago.

Next month we will be celebrating the 35th anniversary of Beni-Abbes and will mark the occasion with a special luncheon on 29 May. We hope you can join us. (Details to follow.)

We also wish to remember the life of the poet Noel Davis who died a few days ago. Noel collaborated with John Coleman over a long period and together they put many of Noel's poems to music. The most well-known is "The Bush Beatitudes". Thank you Noel

Best wishes for a happy and safe Easter,

Claire Manthorpe

Editor

Prayer Points



This month we especially pray for:

- * Stewart Betts as he settles in to the role of Acting Community Leader.
- * Family and friends of the poet Noel Davis who died recently.
- * Eileen Glass as she steps down from the national role of Director of Fundraising and Development.
- * Deacon Jessie Banez as he prepares for his ordination to the priesthood.
- * Family and friends of Tim Warwarek and Peter Ryan who died twelve months ago.



We've recently had some changes in our houses and Rosey, Louise and Katrina are now making home together. Above, Rosey making Louise feel welcome in her new house.

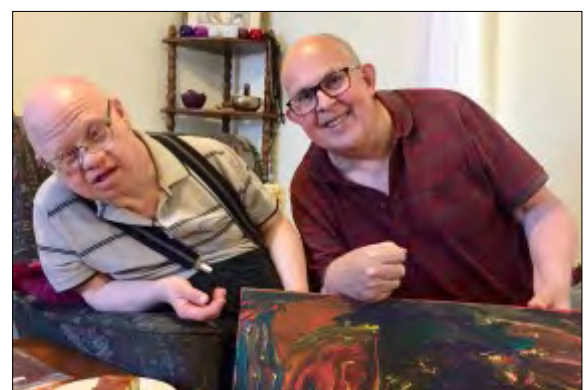
Mary Oliver – *On Thy Wondrous Works I Will Meditate (Psalm 145) – 7*

I know a man of such mildness and kindness it is trying to change my life. He does not preach, teach, but simply is. It is astonishing, for he is Christ's ambassador truly, by rule and act. But, more, he is kind with the sort of kindness that shines out, but is resolute, not fooled. He has eaten the dark hours and could also, I think, soldier for God, riding out under the storm clouds, against the world's pride and unkindness, with both unassailable sweetness, and tempering word.

(Poem used at Peter Ryan's funeral.)



Young Tim and Peter.



"Mature" Tim and Peter.

CAN YOU HELP?

- ◆ **Beni-Abbes will celebrate its 35th anniversary this year.** We're looking for volunteers to join a group to support organisation of a **celebratory luncheon.** Please email Stewart if you would like to be involved: hobart.leader@larche.org.au

- ◆ **Lawn mowing** at 40 is a fairly big job but if we could spread the load it would be a lot easier. Even if you could help out occasionally it would be much appreciated. How about it? Contact the office if you're interested.



Helping Rennie Jaurigue celebrate his birthday at our March Solidarity night. Many happy returns Rennie!

Whilst we do receive funding from government sources, some of our costs are not covered by those funds. **For example, we need new, easily accessible, clotheslines for one of our houses.** We therefore continue to rely on the generosity of donors and are grateful for any contribution, whether large or small. Thank you!



L'Arche Beni-Abbes Hobart – How to donate

Name: _____

Address: _____

Email: _____ Phone: _____

Cheque: Please make cheques payable to L'Arche Beni-Abbes Community Inc and post to:
 L'Arche Beni-Abbes Community
 PO Box 132
 Moonah TAS 7009

Online transfer:
 Account name: L'Arche Beni-Abbes Community Inc
 BSB 067100
 Account 00920375
 Please include your name in the transfer details.

Cash: Please make cash payments at the office at 24 Hopkins Street, Moonah, from Mondays to Friday between 9 am and 2 pm.

Donations over \$2 are tax deductible.

Welcome Stewart

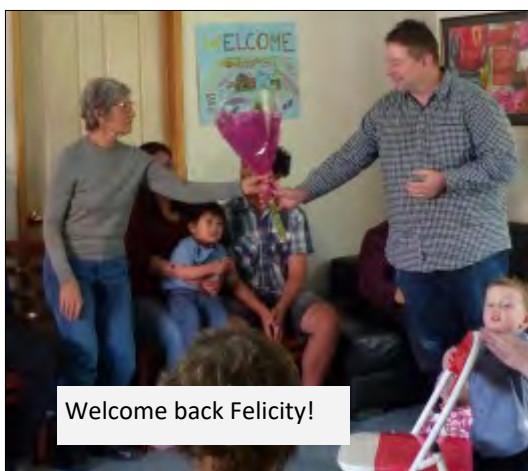


We passed the candle around and all had the chance to say some words of thanks and welcome to Stewart.





Left: are Stewart's ankles safe?



Welcome back Felicity!



Left, Rosey presenting flowers to Stewart's wife, Mel.



Around fifty people gathered to welcome Stewart and meet his family. It was a very joyful occasion, an extra bonus being the safe return of Felicity Rose.

We also took a moment to remember our dear friend Tim Warwarek as it was the first anniversary of his death.

People of L'Arche Hobart – Stewart Betts

People of L'Arche – Stewart Betts

How long have you been with L'Arche?

I commenced with L'Arche Genesaret (Canberra) in December 2012. It has been a nine year journey so far!



What is your role?

I am the Acting Community Leader for L'Arche Hobart. During my time in the Canberra Community I lived the roles of Assistant, House Coordinator and Homes Coordinator but have now moved to the best state in Australia.

What do you love/enjoy about L'Arche?

There is nothing better than a community gathering or shared meal to remind oneself of how important it is to share connections and mutually transforming relationships. They are the heart of L'Arche in my opinion.

How do you relax when not at work?

I try to find time for reading books and newspapers of any type or description. Unfortunately, newspapers are rarely found in hardcopy these days but I'm

old enough to remember life before the internet! I also hang out with my beautiful wife Mel and children Georgina and Jonathan.

What is something we don't know about you, but will after reading this!

My first experience of inclusive community was in Germany where I visited the Bethel organisation near Bielefeld. It planted a seed for me and I knew that day in 2002 that I would be involved again in community. It happened almost exactly ten years later! More info available via <https://www.bethel.eu/about-us/putting-community-into-practice.html>

Stewart pictured at Garry's birthday dinner and "cake and candle" ceremony.

Rosey's holiday



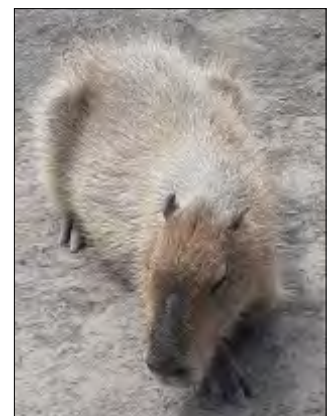
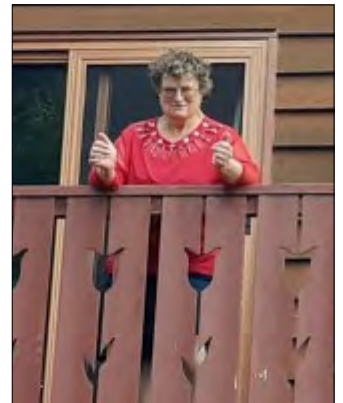
Above: It looks like Rosey's in Europe, but it's the Grindelwald Swiss Village in the Tamar Valley.

Below: playing mini golf, relaxing, a meerkat, a capybara and a platypus.

Rosey and Scott recently escaped the Big Smoke for the tranquility of the Tamar Valley where they stayed at Grindelwald, a perfect base for day trips.

One of the big highlights was a visit to Tasmania Zoo where they saw meerkats, birds, monkeys, alpacas, an ostrich (it was big!), Australian animals, and even some animated dinosaurs. "I want to go back", Rosey said. Another excursion was to Seahorse World and Platypus House at Beauty Point.

And of course there was plenty to do at the resort – swimming, mini golf, games room, dining, shopping etc. The weather was kind and, all in all, the trip was a great success.



Happy birthday Garry!



Above: On the night of his birthday, Garry went out to dinner with family and some of his friends. During the day he and his brother David shared a game of indoor golf (below).



A few nights later, 13 of us gathered for dinner and the traditional "cake and candle" ceremony. (Below and above right)



March 2021, Café L'Arche ...



Above: Stewart welcomed everyone to his first Café L'Arche.



Talented line-up of Al Campbell, John Coleman, Rohan Whelan and Andy Whitaker. Al, incidentally, is a "sound engineer, musician, songwriter and all round good guy" and performed some of his own beautiful songs for us.



John and Garry belted out some lively numbers.



Leanne sang "All I have to do is Dream".



Above: Terry and Louise having a catch-up.



Right: Louise and Rennie sang one of Louise's favourite songs from church.

... and a link to a party in 1988

I've been scanning old photos in anticipation of our 35th anniversary and recently scanned some photos of a very cute little fellow celebrating his third birthday at Beni-Abbes in October 1988. His name was noted simply as "Andy". A couple of nights later I met a tall young man named Andy at Café L'Arche. And of course it's Andy Whitaker, son of Sue and Geoff who were heavily involved in the community, with Geoff being Community Leader for some years.



Above and right: Looks like a nautical theme, with very creative use of egg cartons!

Below: These folk were at Café L'Arche and obligingly lined up for a photo. Their faces all appear in the very early photo albums and some of them might even have been at Andy's party.

Nigel Rogers, Fr Terry Yard, David Briers, Brendan Sullivan, Paula Sullivan, Andy Whitaker, Helen Quinn and John Coleman.



A spot of history – back to the eighties



The Bicentennial Bash with Lutana parish 8 October 1988. Ian McKellar, Ann Huxley and Peter Ryan.

Celebration is one of the things that is at the heart of all L'Arche communities.



Celebrating Elizabeth Compton coming into membership 24 July 1988. Peter Ryan, Katrina Dick, Liz, Ann Huxley, front Ian McKellar and Carolyn Webster.



Farewelling Dave McGoran who came from Vancouver to be a live-in assistant. Music is still an important element of community life, although guitarists tend not to sit on the floor these days!



Celebrating Ann Huxley's birthday.



Celebrating the Christmas story 1988.

Then and now

Some other things haven't changed much at all either ...

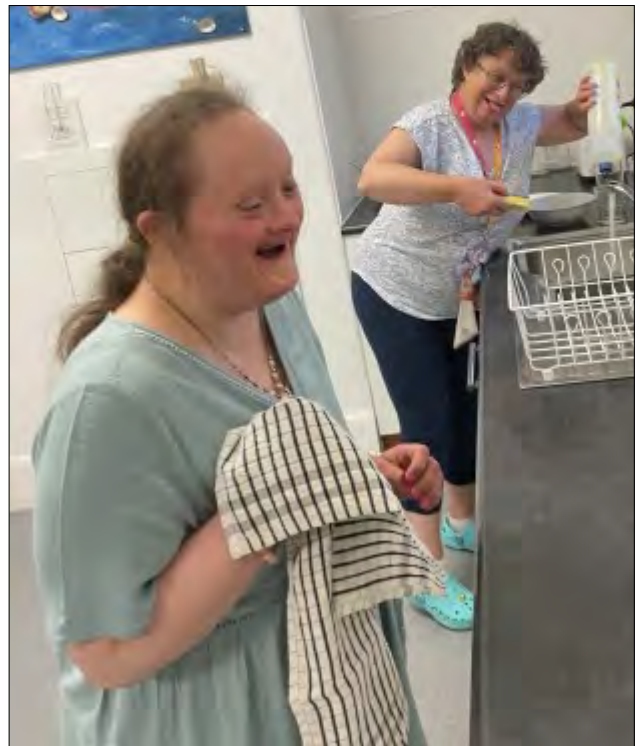
Below: Ann Huxley trying out the new netball ring in May 1988.



Right and below: Garry, Mel and Willie assembling the basketball net that Garry was given for his birthday.



There are still laughs to be had when doing chores. Below left: Ian, Carolyn and Ann in 1988, and below right: Louise and Rosey in 2021.



What else have people been doing?

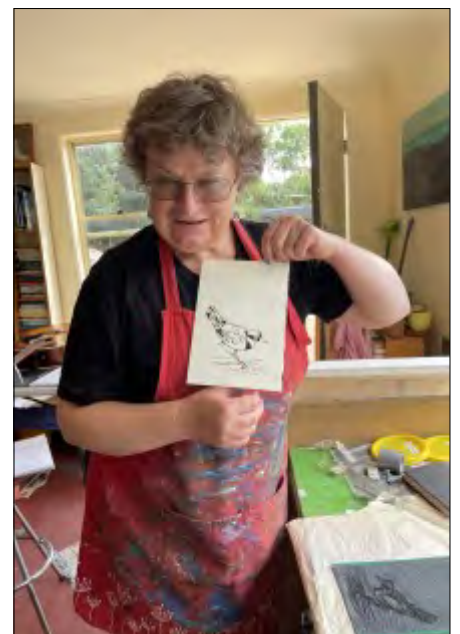
Welcome back! After being away from Tassie for over a year, Felicity Rose has returned and we are all delighted to have her back amongst us. Louise was very quick off the mark in catching up with Felicity.



A happy announcement from Helen Quinn who has become a grandmother! Her daughter Emma and son-in-law Alex recently welcomed baby Amos into the family.



Louise, Rosey and Mel enjoyed lunch at Jenny and John Coleman's home, after which John and Rosey did some terrific artwork.





April 2021

Sunday	Monday	Tuesday	Wednesday	Thursday	Friday	Saturday
			31 March Washing of the Feet	1 Holy Thursday 	2 Good Friday 	3 Easter Vigil 
4 Easter Sunday Chris Coleman's birthday. Kat Barrington's birthday. 	5	6 Celebration of Greg Burles' contribution to Community, 6-8 pm, 40 Pirie St Bec Harding's birthday	7	8 Eileen Glass' birthday	9	10
11	12	13 Katherine Black's birthday	14	15	16	17
18	19 Sylvia Cross' birthday. Eamonn Pollard's birthday.	20	21 Coffee Night, 7.00-8.30 pm, 40 Pirie Street.	22 Louise Pickering's birthday	23	24
25	26	27	28 Raphael Jaurigue's birthday	29 Board meeting 5 pm	30 Deadline for May <i>What's News</i>	

HAPPY ANNIVERSARY!

Paula Sullivan – 33 years – 1988

What's Solidarity?

Once a month (usually the first Tuesday) we gather for a simple evening meal and make a small donation that goes to help support L'Arche Zimbabwe. After dinner we have an activity of some kind, sing a song or two, hear about upcoming events, and have a short period of prayer and reflection, always finishing with a song. It's always fun and links us to the world-wide L'Arche family.



What are Coffee Night and Café L'Arche?

Cafe L'Arche evolved from Coffee Night. Both are evenings of music and socialising.



Café L'Arche is held in a bigger venue and traditionally has a wider range of musicians and more of a café atmosphere. They're both joyful occasions and guaranteed to get your toes tapping. Bring your guitar, your singing voice, your friends and family and have some fun. (And refreshments.)



May 2021

Sunday	Monday	Tuesday	Wednesday	Thursday	Friday	Saturday
						1
2	3 David Clarke's birthday	4 Solidarity 6-8 pm, 40 Pirie St	5	6	7 Carol Stokes' birthday	8
9	10	11	12	13	14	15
16	17	18 Nora Cochrane's birthday. Terry Watson's birthday.	19 Café L'Arche, 7-8.30 pm, St Theres's Hall, Moonah Lesley Lewis' birthday. Felicity Rose;s birthday.	20	21	22
23	24	25	26	27 Lindy Dow's birthday	28 Debbie Finlay's birthday	29 35th anniversary lunch, 12 noon, St Therese's Hall
30	31					



L'Arche Beni-Abbes Community
Office: 24 Hopkins St, Moonah
Phone (03) 6228 3920

Acting Community Leader, Stewart Betts
hobart.lead@larche.org.au

Business Manager, Kat Barrington
hobart.office@larche.org.au

Houses Coordinator, Maria Flynn
hobart.34sa@larche.org.au

Services Manager, Paula Sullivan
hobart.services@larche.org.au

Quality Coordinator, Ash Kaur
hobart.qualityco-ord@larche.org.au

Finance Officer / Payroll, Bec Harding
hobart.accounts@larche.org.au

Board Chair, Brendan Sullivan
brendan@sullivanmail.com.au

What's News Editor, Claire Manthorpe
manthorpecf@gmail.com

If you want any information, please contact us ...



by phone 6228 3920



or email hobart.office@larche.org.au



or Facebook Message – our Facebook page is
L'Arche Hobart - Beni-Abbes

For information, stories and films about L'Arche
Australia and L'Arche International, visit:

www.larche.org.au/

www.larche.org/en/welcome

Feedback to L'Arche Hobart: We welcome feedback from you, including complaints and compliments. If you would like to offer us feedback, you can phone us on 6228 3920, email: hobart.lead@larche.org.au, or post to: PO Box 132 Moonah 7009. We can support you in this if you need any assistance.