

L'Arche Australia Newsletter

December 2023

Welcome to the L'Arche Australia end of year Newsletter. We continue to live life to the full within our communities as we live out our L'Arche Mission.

Meeting of the National Listening and Speaking Group (Sub-Committee of the L'Arche Australia National Board)



NLSG Members: Mark T. (Adelaide), Stewart T. (Melbourne), Garry F. (Hobart), Rose McL, Sam L. (Bendigo), Marilena P. (Sydney) & Anne L. (Brisbane) and their companions.

The meeting opened with a welcome to country and a welcome to those joining the group for the first time: Mark and Sam. We also discussed news from each community and from L'Arche Australia.

L'Arche Australia Mandate (Easy read Version) approved by the NLSG.

The different areas were shared amongst three groups comprising Sydney and Brisbane, Adelaide and Hobart, Bendigo, and Melbourne.

Areas:

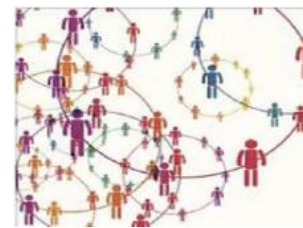
Living out the values



Leadership



Unity and Solidarity



Formation



Spiritual Growth



Communication and Fundraising



L'Arche Australia Newsletter

December 2023

I am, we are: Representing our communities.



This session was to enable NLSG members to represent all the members living with disabilities in their communities. We watched a video from L'Arche Sudbury called "I am..." then there was a discussion about representation with the whole group followed by small group discussions then sharing of what they discussed.

Representatives recorded for them and others in their communities.

- Who am I/they?
- What brings me/them joy?
- What things I/they love?
- What makes me/them sad?
- What are my/their dreams?



What was the learning?

We learnt things about people in other communities.

Common things we found we liked: work, shopping, traveling, sharing life together.



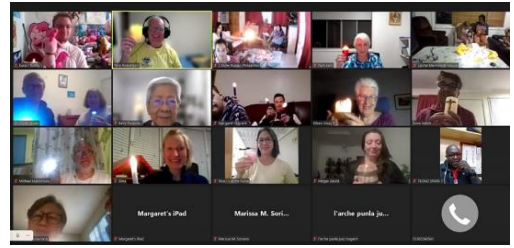
NLSG members and their Companions

L'Arche Australia Newsletter

December 2023

We also discussed the “L’Arche Festival of Light” and the “Walking Together with L’Arche”

Photos from those events and celebration from those who were able to participate.



We are deeply thankful for your support for L’Arche Australia over the past year.

“No act of kindness, however small, is ever wasted” (Aesop)



L'Arche Australia Newsletter

December 2023

Could you be a regular donor to L'Arche Australia?
Regular Donors help us in L'Arche Australia in supporting current communities and growing new communities.

L'Arche is a worldwide federation of people, with and without intellectual disabilities, working together for a world where we all belong

I would like to support the work of L'Arche in Australia with a donation of: \$



L'Arche Communities are vibrant places of welcome, belonging and celebration. Find out more at www.larche.org.au



\$200 \$50
 \$100 \$30
 My Choice \$.....

(Debited from your nominated Credit Card around the 15th of each month)

OR I would like to make a monthly gift of \$

EITHER Please debit this card VISA MASTERCARD Email

Debit/Credit Card number

Expiry date / CW NUMBER

Name of Cardholder

Signature

OR **Make a direct Electronic Funds Transfer to L'Arche Australia Ltd** BSB: 034-060 Account number: 288996
PLEASE USE YOUR SURNAME & INITIALS AS THE REFERENCE Return this form with your details so that we can thank you.

OR Please find enclosed Cheque (payable to L'Arche Australia)

Address City

Postcode State Telephone number

Email To receive future Newsletters by email please tick this box Donations can also be made online: www.larche.org.au/

Donations over \$2 are Tax Deductible

I do NOT require tax deductibility for this donation
 L'Arche Australia keeps donor's information private. If you do not wish to receive future Newsletters, please tick this box

Leaving a gift in your Will is a simple yet powerful way to support L'Arche Communities. Please consider leaving L'Arche a gift in your Will- contact fundraising@larche.org.au

Address: L'Arche Australia PO Box 4065, Homebush South NSW 2140



Post in the reply-paid envelope



Call L'Arche Australia to speak to us about a donation. Office: 0490 759 528



Donate online at: www.larche.org.au/

